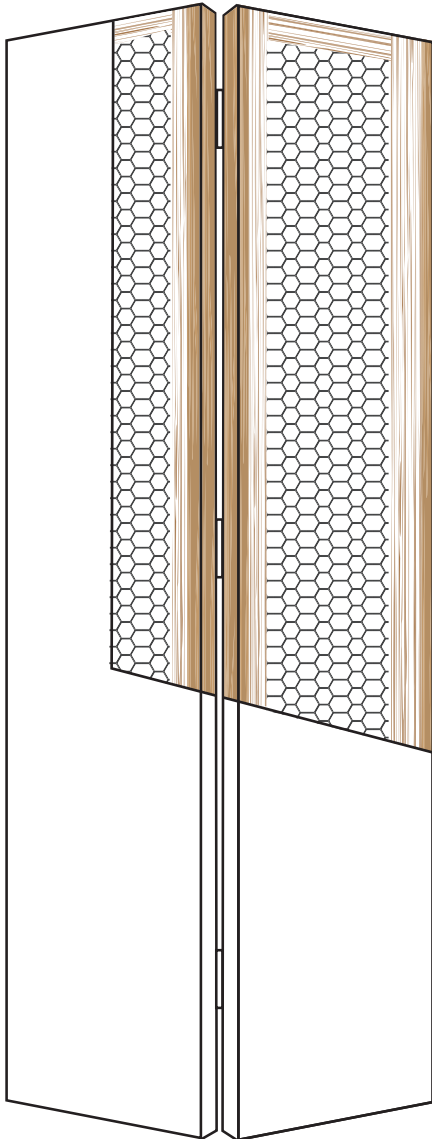


Hollow core folding door

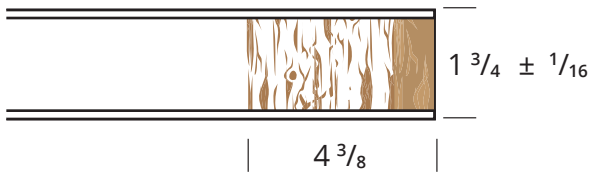
Series 4800

V4 834PL2

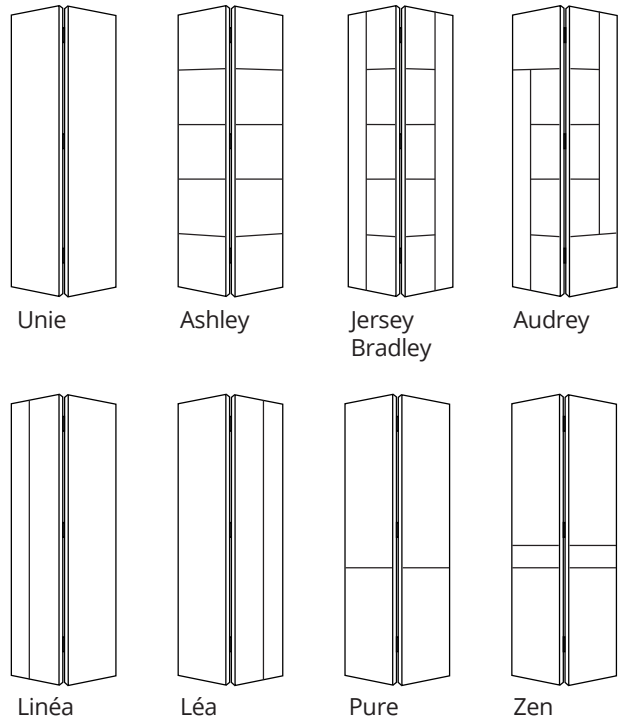


SPECIFICATIONS	DESCRIPTION
Rails	3 1/4 (83 mm) LSL type
Stiles	4 3/8 (111 mm) LSL type including 7/8 (22 mm) wood, preferably matching veneer
Core	Hollow with honeycomb, 1 (25 mm) cells, 11 PSI
Face	4 mm HDF (850 kg/cbm) as selected
Glue	type II, water-resistant, ASTM E2074 standard formaldehyde free
Hinge	Heavy-duty installed
Warranty	Lifetime against warping

*Dimensions are nominal before trimming



Designer series (HDF premium)



Intertek

All doors manufactured by ID Doors comply with the standards of the Canadian Standards Association. CAN/CSA-0132.2.0.90.